

Violoncello

Trio

für Pianoforte, Clarinette und Violincell

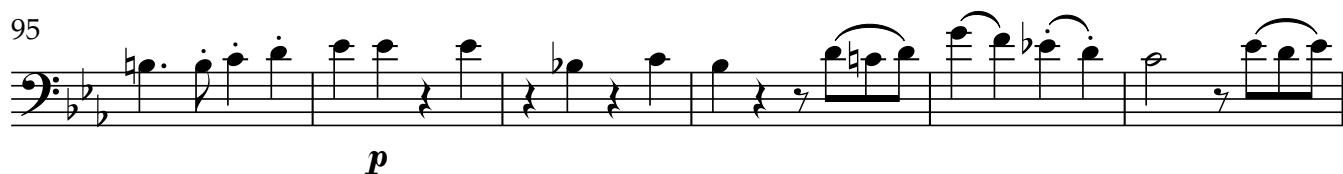
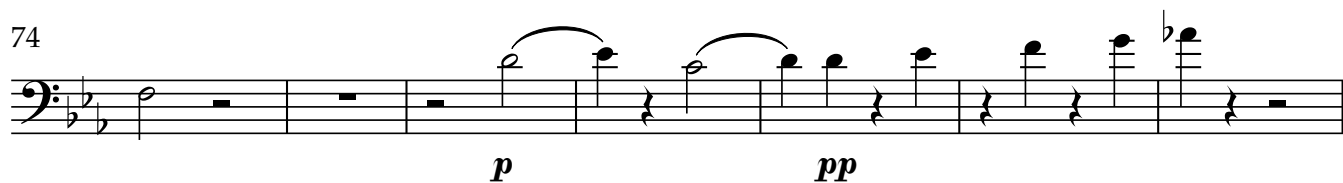
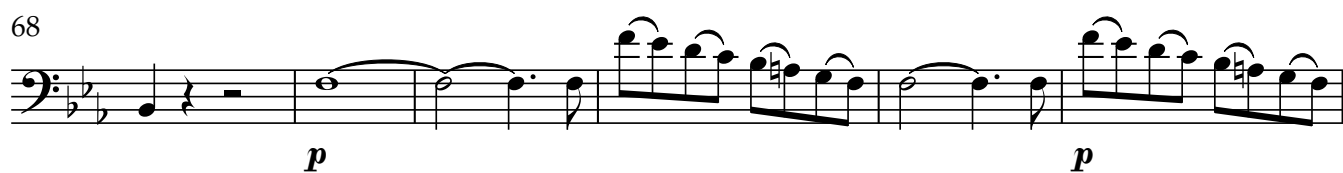
Ludwig van Beethoven, Op. 38

Adagio

Measures 1-15 of the Adagio section. The key signature has two flats (B-flat and E-flat), and the time signature is 3/4. The music begins with a forte (*f*) chord, followed by a piano (*p*) passage, then a forte (*f*) passage, and a piano (*p*) passage. Measure 6 starts with a forte (*f*) chord, followed by a fortissimo (*ff*) passage. Measure 9 starts with a piano (*p*) chord, followed by a fortissimo (*ff*) passage. Measure 15 starts with a fortissimo (*ff*) chord, followed by a fortissimo (*ff*) passage, and a fortissimo (*ff*) passage. The section ends with a fortissimo (*ff*) chord.

Allegro con brio

Measures 16-57 of the Allegro con brio section. The key signature has two flats (B-flat and E-flat), and the time signature is 2/4. The section begins with a fortissimo (*ff*) chord, followed by a fortissimo (*ff*) passage, and a fortissimo (*ff*) passage. Measure 32 starts with a fortissimo (*ff*) chord, followed by a fortissimo (*ff*) passage, and a fortissimo (*ff*) passage. Measure 38 starts with a fortissimo (*f*) chord, followed by a fortissimo (*f*) passage, and a fortissimo (*f*) passage. Measure 45 starts with a piano (*p*) chord, followed by a piano (*p*) passage, and a piano (*p*) passage. Measure 50 starts with a fortissimo (*f*) chord, followed by a fortissimo (*f*) passage, and a fortissimo (*f*) passage. Measure 57 starts with a piano (*p*) chord, followed by a piano (*p*) passage, and a piano (*p*) passage.



Violoncello

3

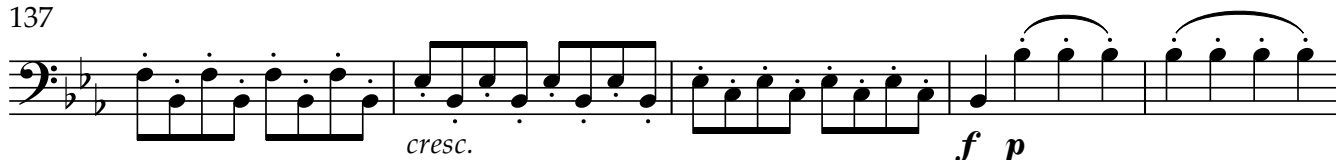
127



133



137



142



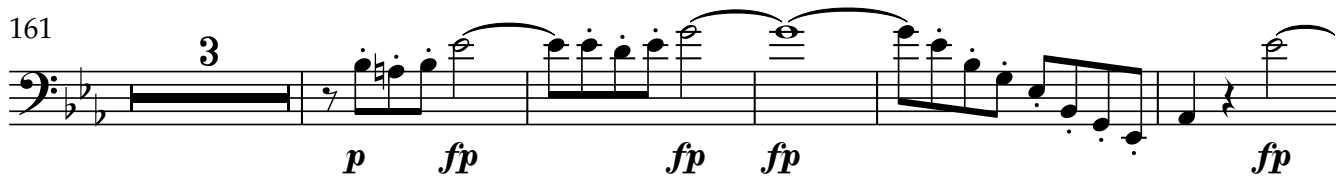
148



153



161



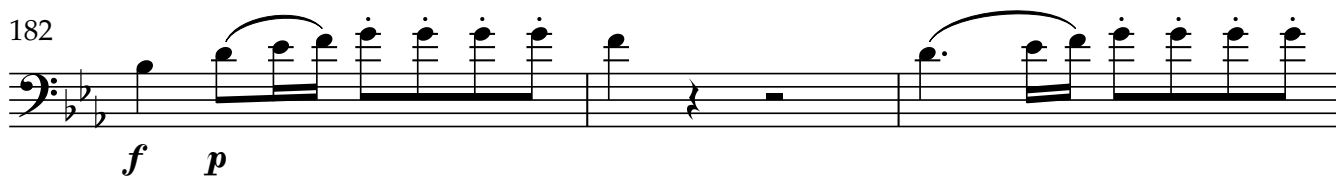
169



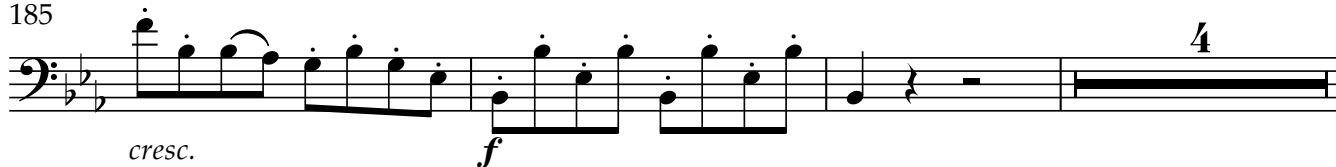
175



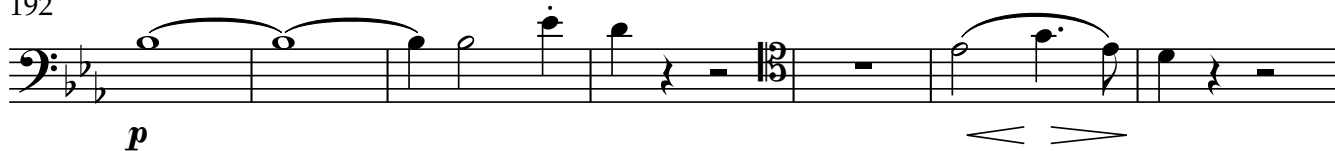
182



185



192



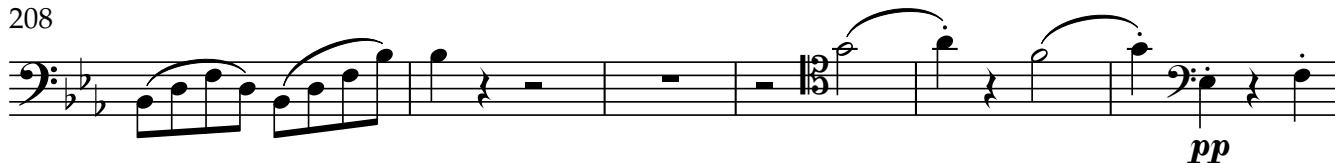
199



204



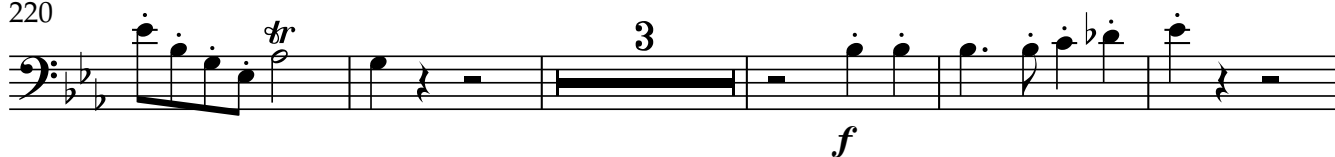
208



214



220



228



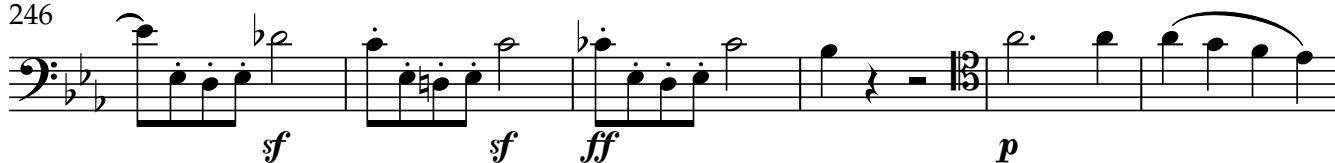
234



241



246



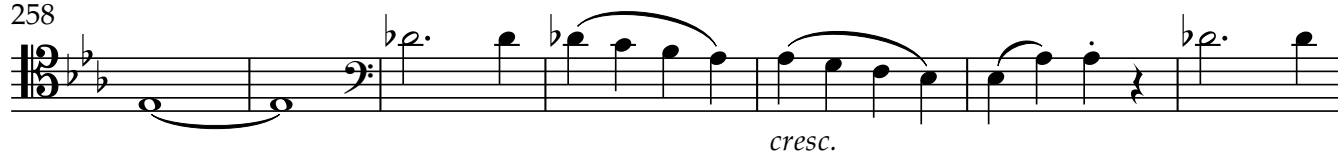
252



Violoncello

5

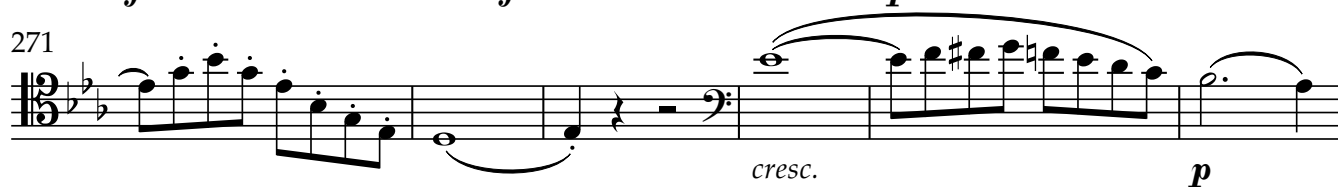
258



265



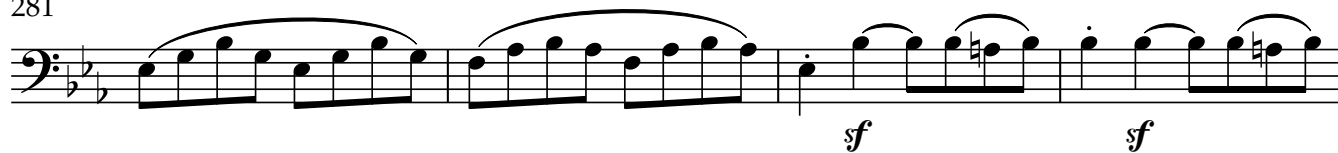
271



277



281



285

